

SHEET NO 1
PLAN NO 1797

ELEVENTH STREET SEWAGE

BETWEEN
WESTERN AVENUE AND MADISON STREET

ADAMS STREET SEWAGE

BETWEEN
BASE LINE STREET AND SOUTH LINE OF TRACT

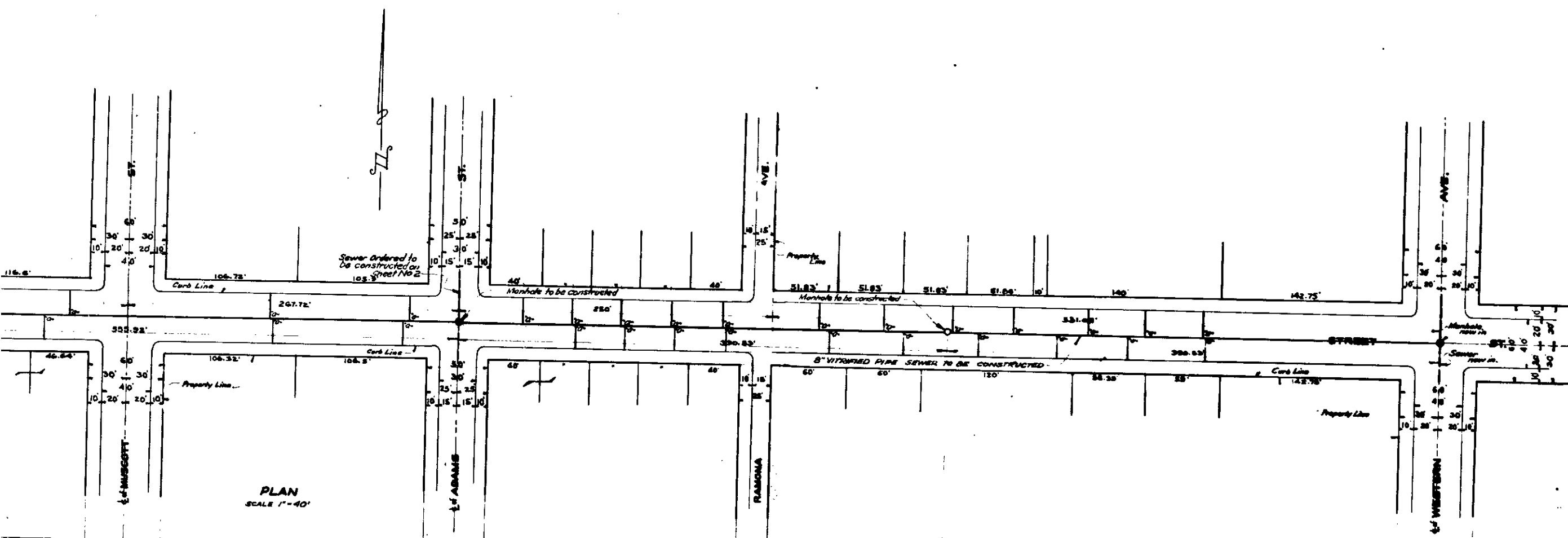
HANCOCK STREET SEWAGE

BETWEEN
ELEVENTH STREET AND SOUTH LINE OF TRACT

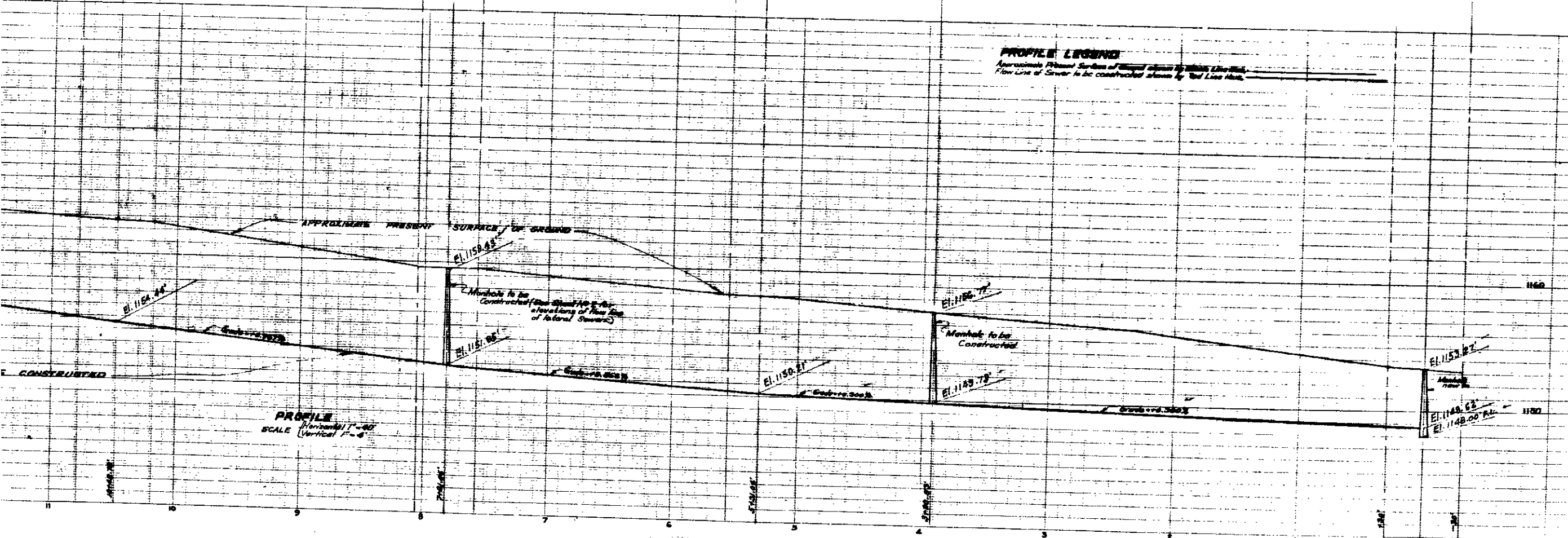
IN THE
CITY OF SAN BERNARDINO
CALIFORNIA

OCTOBER 1948

PLAN ADOPTED February 21, 1947



PLAN
SCALE 1"=40'



PROFILE
SCALE Vertical 1"=8'

PROFILE LEGEND

Approximate Present Surface of Ground shown by Dotted Line
Flow Line of Sewer to be constructed shown by Red Line
Flow Line of Sewer now in shown flow

LEGEND

Tr in means 108 or better
CR in means 108 or better
M means Manhole
E1 means Elevation
8" Vitrifed Pipe Sewer to be constructed shown flow
8" Vitrifed Pipe Sewer now in shown flow
Manhole to be constructed shown flow
Manhole now in shown flow
8" Vitrifed Pipe Sewer now in shown flow

SEWER DETAIL

Line of 8" Vitrifed Pipe Sewer to be constructed
Line of 4" Vitrifed Pipe Sewer to be constructed
All of 8" Manholes with 4" connecting Sewers to be constructed
M of Manholes to be constructed

TITLE TO STREETS

ELEVENTH STREET was dedicated by Trust No 2470, Book
Line House Tract, recorded in book 3467, page 83, by Trust No 1700
Civic House Subdivision described in book 27, page 53, and by
Deed recorded May 7, 1943 in book 1592 of official records of page 329,
records of San Bernardino County, California.
ADAMS STREET and HANCOCK STREET were dedicated
by Trust No 2470, Book Line House Tract, recorded in book 3467
of page 83, records of San Bernardino County, California.

GRADE ORDINANCE

Grade of ELEVENTH STREET was established by Resolution No 1488,
ADAMS STREET was established by Resolution No 1637,
HANCOCK STREET was established by Resolution No 1632,
of the City of San Bernardino, California.
Adopted November 29, 1948.

DATUM

All Elevations shown in this plan are in feet and are
above a plane which is 745.25 feet above the
City Bench Mark as established by Ordinance
363 of the City of San Bernardino, California.

